









# AUTOMOBILE SECTION

## AUTO CAMPING PARTIES GIVES SPRING WARNING

Organization Urges Travelers Not To Make Rubbish Dumps Out Of Some Of South's Most Attractive Scenic Locations

TIN cans, paper bags, cracker crumbs and soiled paper napkins are responsible for some bad news which effects every auto owner in the western part of the United States, but particularly in the southern counties of California, according to officials of the Automobile Club of Southern California.

## CAR INJURED BY STEADY BRAKING

Expert Declares Constant Use of Brakes Wears Out Automobile

The greatest fault with American drivers today is that they drive with their brakes. This was the statement of an automobile factory official.

"The motorist should take things easy in driving, whether in a crowd or out of a crowd," he adds. "Past driving between short city blocks, followed by a sudden jamming on of the brakes, gains little time and is expensive, both in the wear and tear on the tires, the burning out of the brake lining and injury to the brakes and other mechanical parts of the car. Never put more pressure on the brakes than is absolutely necessary to stop at a point you wish.

"Every time you hear a traffic officer's whistle in a large city, you almost immediately hear a crunching of brakes and scraping of dry tires on the pavement.

**Engine Brakes on Hills**  
"Even in long cross-country drives where hilly country is encountered, some drivers constantly jam on their brakes when slowing down instead of allowing their cars to slow down before the brakes are applied.

"In going down hill, take your foot off the accelerator, and the motor, at a safe pace, will hold the car back. If the grade is very steep, shift to second or first speed as the grade may require before starting.

"Under no circumstances is it advisable to throw the clutch out when actually driving down hill. To do so may mean absolute loss of control. It is not good driving, either, to shut off the spark completely. It is a safe practice to have the motor running in order to have power on tap in case of emergency.

"There is no question at all that brakes are extremely important, for the purpose for which they are built, but, simply because they are efficient, reliable, and the easy way to drive, is no reason for abuse which results in damage to other parts of the car as well."

**FREIGHT RATE ABROAD**  
The freight rate for shipping an automobile from New York to London, in a box, is 25 cents per cubic foot, which makes the charge vary from about \$68 for a small car to \$149 for a large one.

**LEADING MARKETS**  
Australia, Belgium, Canada and Mexico are the leading markets for American motor trucks.

## STATE GETS CLOSE TO MILLION MARK

More Than 775,000 Motor Vehicles Are Now Registered; Some Figures Of Interest

By GIL A. COWAN  
Special to The Evening News

ACRAMENTO, March 17.—Approximately 775,000 motor vehicles have been registered by the state, according to Will H. Marsh, superintendent, in an informal estimate. Of this number 690,000 are pleasure cars, compared with a total of 822,394 last year. Last year's total of 930,946 of all classes of cars, including pleasure cars, commercials, motorcycles and trailers, will be exceeded easily within another month or two and California will be able to boast a million motor vehicles.

Reports from several branches of the last minute rush for licenses have not yet been received by the Sacramento office, which makes impossible an accurate estimate, according to Mr. Marsh.

Registration of all kinds last year totalled 930,946, according to his figures, while in 1915 there were only 163,000, showing the great growth of the automotive industry. The revenue for 1915 was only \$1,600,000 from the motor vehicle registration, as compared with \$8,364,442.09.

This year Mr. Marsh is working toward an efficiency record in the matter of expenditures by his department, and, barring new legislation in the matter of fees, he expects to do business on 7 per cent of the revenue. Following is a recapitulation of the motor vehicle department's record for the last three years:

Year	Expenditures	Net Receipts	Per Cent
1920	\$790,513.88	\$5,368,800.76	14.2
1921	733,882.09	6,815,201.12	14.2
1922	719,676.64	8,364,442.09	9.2

With new low prices for motorcycles it is noted by the number of registrations that motorcycles are falling from favor, the number in 1923 being 16,301, against 17,729 in 1921, a total decrease of 20.8 per cent in two years.

## ENGINEERS PLAN IMPROVED ROADS

Cost of Fuel and Highway Tests Are Told at Kansas Meeting

MANHATTAN, Kan., March 17.—How to make the road home shorter by making it better was discussed by engineers from this and adjoining states in the second annual road school held at the Kansas State Agricultural College. County engineers from thirty Kansas counties attended.

The work being done in Iowa to determine fuel consumption on roads of different kinds and different grades, showing how much saving in the cost of gasoline can be effected by a change from a steep to a level grade, was explained. Approximately one-half the gasoline is used in the resistance within the car and one-half in tractive effort.

**Big Saving**  
On one road in Iowa the cost of a change from earth to a hard surface will be paid in eight years with the saving of gasoline alone. On a certain other road, the speaker explained, the saving would not be paid until a further eight years.

## YOSEMITE ROADS WILL OPEN SOON

Melting of Snow on High Levels Will Permit Tourist Traffic

YOSEMITE NATIONAL PARK, Cal., March 17.—Snow is disappearing fast on the high levels of Yosemite National Park, and every indication points to an early opening of automobile roads.

"It looks now as if the Wawona road will be open to travel around April 1," said G. S. Sovulewski, chief of the government's maintenance and construction forces, when he returned today from an inspection trip by horseback. "If that date holds good, then the Big Oak Flat road from the north should be traversible the latter part of May and the spectacular Tioga road early in July."

Travel will not be permitted over any road in the park until the surface is dry enough to withstand damage. Superintendent Lewis has authority under the 1923 regulations to prohibit travel over any road as conditions may warrant, experience in years past has shown that too early travel over any road really worked hardship on the great number of travelers coming after and that the government's small road fund was eaten up making repairs which otherwise would have been unnecessary. Bulletins issued by Superintendent Lewis will give ample notification when motorists can hit the open road for the Valley Incomparable.

**Trips for Tourists**  
Chief Ranger Forest S. Townsley also has reports that snow is disappearing rapidly. All the roads in Yosemite valley are open and the exit roads can be traveled for a great distance up the valley walls. Daily eight-seeing trips for visitors who reach the valley by train via El Portal are being operated to Inspiration Point on the Wawona road and to Rainbow View on the Big Oak Flat road.

Late opening of the automobile roads last year held back attendance records. If the roads open a full month earlier this year than last, as seems probable, Yosemite will have at least 125,000 visitors.

**Dealers Reach Total  
Of 40,889 in Nation**

CHICAGO, March 17.—There are now 40,889 automobile and motor truck dealers in the United States. Of these 2,485 are in cities with populations between 100,000 and 500,000. In cities between 10,000 and 100,000 there are 9,192, while 26,371, or more than half the total, are in small towns having a population of less than 10,000.

**GOES INTO TIRES**  
More than two-thirds of the rubber produced in the world is being manufactured into automobile tires of various kinds.

## TEN SUGGESTIONS TO FIND SAFETY

Follow This List of Rules And Stay Out of Jail or Hospital Bed

Here is a list of tips for wet weather wayfaring that ought to help to keep everybody out of the hospitals and jails.

1. When driving in a closed car during cold or stormy weather with the windows all closed, your ears don't serve to detect approach of trains or other vehicles, so well. Therefore it's imperative that your eyes do double duty.
2. Trains and trolley cars travel fast in the suburbs and stop quickly at intersection in the business districts. They are bad medicine for motorists any time. Watch them and enjoy long life.
3. In the winter, days are shorter. More night driving is necessary. Extra light bulbs come in handy and properly adjusted headlights give better road light and don't blind the other fellow.
4. A recent decision of an Eastern judge provides that you are not relieved of responsibility for injuring or killing a person because you didn't see him. In fog or blinding headlight glare, pull up and play safe.
5. School signs mean what they say. "Drive Slowly" and protect the kiddies. They trust you, so keep the trust even if it does take a minute more.
6. Wet streets or watery mud often make non-skids slip. Chains are a nuisance but they are better than a hospital or funeral bill, or even a big repair bill, and they won't work in the tool box.
7. Insurance is a life saver. Keep your policy up to date. Fire takes only one spark, and one thief that gets away won't get soft-hearted and bring your car back, or any of the accessories either.
8. Don't Crowd Hogs  
Road hogs ought to be hung we know; but they are always on the job. Give them a wide berth they may be packing overloads of Volstead bitters.
9. The pedestrian on the open highway at night, especially in cold weather, is another bugaboo to motorists. He is bundled up in dark colored wraps, and seldom looks out for himself. He is hard to see so keep a sharp look out and save casualties.
10. Keep the car under control at all hazards. Quick stops on slick streets are disastrous. And even on dry streets they sometimes are just a bit too slow to save the crash. Don't skid. Don't cut in. Don't fail to signal long and emphatically at all times.

## DANGERS OF VAPOR

To prevent vapor of gasoline from spreading, care must be taken to avoid overflow. Any gasoline spilled over the tank or around the car forms a heavy vapor that may be ignited as soon as the engine is started.

**Use Is Increasing**  
The use of motor vehicles is increasing in popularity because of their time saving qualities, and

## FIGURES SHOW GREAT DEMAND FOR MOTORS

National Chamber of Commerce Head Sees Bright Future; Use of Auto and Truck Steadily Increasing, He Declares

BASED on figures for January and February, and depending somewhat on supplies of closed bodies, production of motor cars and trucks should approach the three million mark in 1923, according to a statement of Alfred Reeves, general manager, National Automobile Chamber of Commerce, in his address on the "Outlook for the Automobile Industry" made in New York.

The farmer is reported to be entering the automobile market, new truck and bus lines are being established, exports are increasing and the American public is demanding more and more of the efficient individual motor transportation units of which there are now 11,750,000 in use in this country, 10 per cent of which are trucks.

As more than 55 per cent of all the cars in this country are in population centers of 5,000 or less, Mr. Reeves said the best automobile markets are now in the suburban and country districts.

### January Production

"January is generally the poorest month of the year, yet we produced 240,903 vehicles, or 2 1/2 times that of the previous January. February production ran at about the same pace and if the industry is able to get sufficient closed bodies, which in turn depends to a large degree on being able to get plate glass, production should increase, with excellent possibilities of 3,000,000 motor vehicles being made in 1923, as against a total of 2,577,000 last year.

"Exports in January were 1789 trucks and 7180 cars. We are now shipping American motor vehicles to 114 different foreign countries, including a number to Iceland.

"How many motor vehicles can be used in this country—brings up another question as to the transportation needs of 105,000,000 people. Students of the industry believe we can profitably use 12,000,000 cars and 3,000,000 trucks, which would require a renewal demand in excess of 2,400,000 vehicles.

**Outlook Excellent**  
Mr. Reeves as general manager of the National Automobile Chamber of Commerce, which has a membership of 131 manufacturers, expressed the belief that while the industry had many problems and that competition would be very strong, the general outlook for 1923 is excellent.

"Standard motor cars and trucks will be in the greatest demand," he said, "but there will be business for the smaller companies whose products supply certain individual features demanded of their time saving qualities, and



## You Can Get In The Traffic Jam Sunday—

—With the certainty your loss will be paid should you collide with another car.

—Have your automobile protected against

### Fire, Theft, Public Liability and Property Damage.

—When BOOTH writes a policy he guarantees ABSOLUTE PROTECTION and at less cost to you than given by other agencies.

—See us and save time and money, and at the same time keep your automobile insured in Glendale.

## CLINTON L. BOOTH

"Automobile Insurance Exclusively"

AT DODGE AGENCY  
Corner Harvard and Brand  
Box 121. Phone Glendale 1465  
Boulevard, Glendale.

## BIGGEST SALE OF STANDARD MAKE TIRES EVER HELD IN GLENDALE ONE WEEK ONLY—MAR. 17 to 24

30x3 1/2 VIRGINIANS Regular \$13.00 <b>\$7.95</b>	30x3 1/2 GOODRICH Regular \$11.95 <b>\$9.00</b>	30x3 1/2 OLDFIELD CORDS Regular \$16.50 <b>\$12.50</b>
30x3 1/2 VIRGINIAN CORDS Regular \$16.50 <b>\$11.50</b>	32x4 VIRGINIAN CORDS Regular \$32.80 <b>\$20.50</b>	32x4 U. S. ROYAL CORDS Regular \$36.05 <b>\$26.70</b>
32x4 OLDFIELD CORDS Regular \$32.80 <b>\$22.50</b>	35x5 INLAND CORDS Regular \$55.45 <b>\$34.25</b>	36x4 1/2 INLAND CORDS Regular \$46.75 <b>\$28.75</b>

ALL FIRSTS. PRACTICALLY ALL MAKES OF TIRES ADVANCE FROM 10 TO 15 PER CENT BETWEEN NOW AND APRIL 1st.

GET YOURS NOW

## CUT RATE TIRE STORE

A. C. FANGMAN, Manager.  
OPPOSITE POSTOFFICE



\$1335

The split-skirt type of light-weight alloy piston now accepted practice in most good engines, was first successfully used in the good Maxwell. These pistons lighten the labor of the engine, give more power for propulsion, reduce fuel consumption, and generally improve performance. They are but one indication of the fine way in which the good Maxwell is designed and made.

Prices Delivered In Glendale

Table with 2 columns: Car Model and Price. Includes Touring Car (\$1060.00), Roadster (\$1060.00), Club Coupe (\$1170.00), Four-Passenger Coupe (\$1430.00), Sedan (\$1540.00), and Sport Model (\$1212.00).

GLENDALE MOTOR CAR CO.

124 West Colorado Street, Phone Glen. 2430, GLENDALE, CALIF.

The Good MAXWELL

Ford THE UNIVERSAL CAR Spring Is Near. The Most Delightful Season of the Year is at Hand. Will You Be Prepared to Enjoy It With Ford Sedan Price \$595 F.O.B. OPEN SUNDAY AND EVENINGS. JESSE E. SMITH COMPANY. Authorized Ford and Lincoln Dealers. Telephones Glendale 432-433-434. 115-125 W. Colorado St., Glendale, Calif.

PURCHASE SEDAN AS FUNERAL CAR

Demand for Closed Cars is Growing Steadily, Says Agent

Among the latest purchasers of Willys-Knight cars is the Jewel City Undertaking company, of which Ed Phillips is president, that has bought a seven-passenger sedan to be used as a family vehicle in the funerals with which the company is entrusted. This will permit the relatives of deceased persons to maintain a degree of privacy and seclusion at funerals that is sometimes impossible under present conditions. The Willys-Knight factory is turning out cars today at the rate of 300 daily, but even this output renders it impossible for the firm to keep pace with the demand that exists for the cars, according to Harry Kennedy, sales manager of Geo. T. Smith, 228 South Brand, local Willys-Knight and Overland agent. Special favors have been extended to Mr. Smith in the past, mainly on account of the blanket order that he has placed with the manufacturer by which he is to be supplied with every kind of car that is turned out by the factory and by which he agrees to take everything that may be in stock. Even this policy, however, has not enabled him to keep abreast of his orders, and in many instances recently it has only been through the courtesy of his clients that he has been able to secure a car for exhibition purposes. At present he is showing the Willys-Knight Coupe Sedan, which is maintaining its popularity steadily, showing the trend toward the closed car as an all-year-round car.

BIG NUMBERS ON GLENDALE AUTOS

Late Buick Arrivals Reach Million Product Class, Says Galvin

Buick cars bearing numbers that run higher than a million are already reaching Glendale, according to Ray L. Galvin, sales manager of Tanner & Hall, Ltd., 237 South Brand boulevard, local distributor of Buick automobiles. It arrived this week a shipment that shows that the Buick factory has more than passed the million mark in its output. "That's a big jump," Mr. Galvin claims, "from the sixteen cars that were turned out in 1922, the first year of Buick's existence, and today Buick is turning out 16,000 cars a month, at prices ranging all the way from a little over \$1000 to \$2500 for delivery on the Pacific coast. The number of cars manufactured by Buick has only been exceeded by that of the Ford factory, where one style of chassis and five body designs are made, as contrasted with Buick's diversity of styles and bodies. "This involves a complicated manufacturing problem, and the record that has been established by Buick is, in every way, as remarkable as that hung up by the Ford plant." All the cars that reach Glendale in future, Mr. Galvin adds, will bear the high numbers, so that a buyer can be assured of getting one of the latest models made. The firm this week is demonstrating a stock roadster that is attracting a lot of attention from local motorists by its beauty of design and its appearance.

Plan Best Mountain Boulevard in South

REDLANDS, March 17.—Formal proceedings calling for highway construction in Bear valley to the extent of \$165,000 have been started by the board of supervisors acting on a resolution presented for the Big Bear Lake boulevard. The property owners will be assessed for the highway, which will rim the lake entirely. It is planned to start work in the spring and complete it this season. The highway will run through the section in which the big resorts are located and will go through some of the finest scenic country in the south. It will begin at China gardens and go through the country north of the lake west of North creek. The highway will be the best mountain boulevard in the West. It will be eight-inch macadam and eighteen feet wide. The character of the soil and the heavy hauling

Chevrolet Salesman Joins Smith Agency

Bert Farmer, an experienced automobile salesman, has joined the sales force of the C. L. Smith Chevrolet agency at the corner of Orange and Colorado, and he has already found Glendale an excellent place to do business. Mr. Farmer was employed in the Ford agency at Los Angeles for some time, but he gave up this work to enlist under the Chevrolet banner, where he has remained until he has graduated into one of the expert salesmen of the organization. make necessary the heavy pavement. The 28th inst. has been fixed as the day for protest, and while there may be some protest most of the property owners are heartily in favor of it. It is also planned to install an electric ornamental lighting system along the boulevard. News want ads produce results.

Improved Roads Latest Plan Kansas Engineers

(Continued from page 5) cover the cost within any reasonable length of time. Sixty-three types of road in Illinois was the subject of discussion, by an engineer from that state. Tests resulted in a new design of Illinois pavement. The cost of the experiments amounted to \$189,000; the saving in construction of the new over the old design for the year 1923 was \$1,000,000. Engineers are advocating no particular type of road except as local conditions and prospective traffic warrant; discussions in the school brought out. Engineers are trying, not to make all roads the best roads possible, but to make them the most economical roads, all things considered, it was declared. Buy what thou hast no need of and ere long thou shalt sell thy necessities.—Franklin.

Figures Show Great Demand for Motors

(Continued from page 5) ed by a style-loving nation, particularly as the woman is now so important a factor in the buying of the motor car. Prices have been crowded down very low and held there, notwithstanding rising cost of materials and labor. While there have been some failures among dealers, there are still more than 24,000 automobile merchants distributing cars and trucks.

RAIN WATER BEST

Pure rain water is the best that can be used in the cooling system. This is because it is free from mineral substances, which are present in ordinary water and which are deposited on the metal walls of the radiator, piping, jackets, etc., to their detriment. Therefore, when rain water is available, always use it.

GASOLINE USERS DEMAND QUALITY

C. & B. Service Station Sells Product Giving Most Mileage, Claim

"The quality of the gasoline that one uses in his automobile is the factor that determines the amount of mileage he is going to get out of every gallon," declares Bert H. Anderson of the C. & B. Service Station at the corner of Colorado and Brand. "Different kinds of gasoline differ in quality, just as every other class of products turned out by different manufacturers does, and gasoline, to stand the test today, must give the maximum mileage to the man who uses it in his car. "The reason we are featuring Associated gasoline to our customers is because we believe that it is unsurpassed in the delivery of power to the engine, under any and all driving conditions, and the amount of this brand of gasoline that we are selling here on this corner every day, both to our regular customers and to transients, is evidence that it is giving satisfaction wherever it is used." The C. & B. Service Station also carries a line of accessories to meet the needs of its clients, and the facilities for tire repairs that were recently installed have also been an important factor in bringing in a greater volume of business from local motorists.

APPLY WATER INSIDE. When cleaning mud and other dirt from the cells of a radiator, apply a stream of water from the hose, only from the inside of the hood, and not from the outside.

SMITH OBSERVES SIGNS OF SPRING

Chevrolet Sales Jump As That Lazy Feeling Grows On Folks

C. L. Smith, the Chevrolet agent who does business at the corner of Orange and Colorado, has been checking up on the signs of spring that are to be noticed on all hands these days, and he has added another unmistakable evidence to the rest of them to show that the sap is rising in the trees and that the flowers are ready to bloom, if they haven't already appeared. This new sign, he declares, is the call of the open road that is driving purchasers in shoals to hang around automobile agencies, comparing prices and styles, figuring out the facilities that a car offers for packing camp equipment and a few fishing rods, and he adds that he has been reaping a harvest since this spring sickness struck folks around here. "They are coming to him for Chevrolets, he declares, because they want to get a car that will be cheap to run, easy to manage, reliable in performance, and that will be delivered to them fully equipped in every particular, so that they won't be put to the expense of buying a lot of accessories after they get the car. The only fly in the ointment, Mr. Smith says, is that he is kept so busy that he can't take a day off to go our riding himself, but he swears that he will be ready to get out somewhere by the time the fishing season opens, even if he has to neglect his business for a few days.

WARMER WEATHER FAVORS TOURING

Approach Summer Causes Many Buyers to Pick Open Car Models

As the weather grows warmer with the coming of spring, the tendency is more and more toward the open car for summer use, and many purchasers are turning to the touring cars that are constructed in such a manner that they can be converted into a closed car by the simple expedient of attaching curtains, according to Steve Packer of the Packer Auto Co., 245 South Brand, who is featuring the 1923 series of Big Six Studebaker touring cars at the salesroom this week, as well as the closed models. The advantages that the Big Six touring offer are that it is an admirably equipped car for an outing to the hills or to the beach, where the entire family wants to go along and where it is easy to take the children along without burdening someone else with the trouble of carrying them in their laps. The two comfortable auxiliary seats afford abundant seating capacity for seven persons, and if they are not required they fold down out of sight, leaving room for lots of luggage. The sales of the open models are taking a decided jump within the past few weeks, as the time approaches when the weather will permit motorists to spend their time in the open without having to keep the windows of the car closed against the cool breezes of winter.

RAILROAD FEEDERS

According to the opinion of President Harding, costly highways ought to be made to serve as feeders rather than competitors of the railroad.



NASH

This record-breaking shipment consists of two trains, one with 60 and one with 51 fifty-foot automobile cars, carrying a total of 515 Nash cars, valued at nearly three-quarters of a million dollars. Train No. 1 traveled from Kenosha, Wisconsin, via C. & N. W., U. P. and S. P. Train No. 2 was routed from Kenosha over the C. & N. W., C. R. I. & P., E. P. & S. W. and Southern Pacific.

California's Greatest Single Shipment of Motor Cars Has Arrived! 111 Carloads

—All this week conjecture has run high as to who was making the greatest single shipment of motor cars in the history of California. —Now we can announce it is here. And the cars are the new model Nash Fours and Sixes. —California has a habit of breaking records in many different lines, and now she shatters a motor car shipment record to satisfy her unprecedented demand for Nash cars. —Two complete trains, one totaling 60 and one totaling 51 fifty-foot automobile cars, were required to handle the load. —A special invitation is cordially extended to you to come and view the important and far-reaching improvements Nash has embodied in this new line. —Come early. Even this big shipment will be taken up quickly. All over the country these new models have been attracting intense interest. SIX PRICES: Five-Passenger Touring, \$1475; Seven-Passenger Touring, \$1645; Seven-Passenger Sedan, \$2495; Five-Passenger Sedan, \$2335; Coupe, \$2175; Four-Door Coupe, \$2385; Roadster, \$1445; Sport Model, \$1920, f. o. b. Glendale. FOUR PRICES: Five-Passenger Touring, \$1145; Roadster, \$1125; Five-Passenger Sedan, \$1695; Carriole, \$1515; Sport Model, \$1435, f. o. b. Glendale.

Glendale Nash Sales Sales Rooms and Service Station 112 SOUTH MARYLAND Phone Glendale 1678 Glendale

Great Favor Well Earned. More people are talking and thinking and buying the new Overland than ever before—because it is better value—and at the lowest price in its history. All-steel body, finished with baked enamel. Triplex Springs (patented) give easy riding comfort. See the Overland Advertisement in the March 17th Saturday Evening Post. The New Overland Touring \$525. Sedan \$550 Roadster \$525 Coupe \$795 All prices f. o. b. Toledo. GEO. T. SMITH. 228 South Brand Boulevard Glendale 1320. 215 E. San Fernando Road Burbank 143. DRIVE AN OVERLAND AND REALIZE THE DIFFERENCE.

# Repaired and On His Way

ONE thing is certain, after your car leaves our shop we know you will tell your auto-troubled friends about our good work and in that way we can afford to put more time and better work on your repair job.

The economy of having your work fixed once and permanently is easily appreciated by the car owners who have too often taken their troubles to a fly-by-night repair shop, only to bring them here afterwards.

That's why we say bring your car here FIRST.

Our Storage Rate for Automobiles by the Day, Week or Month Is Most Moderate

## FRED S. HILL GARAGE

PHONE GLEN, 1954  
124 S. Orange, Rear of Old Location

### WHEN BANDS SQUEAK

When dirt becomes firmly entrenched in the brake lining, causing chronic squeaking, use a treatment of a little rosin mixed with castor oil applied to the bands.

News want ads produce results.

# SHIPS IN \$12,000 STOCK OF PARTS

### Local Ford Agency Remodels Stock Department to Facilitate Sales

The delivery of a carload of Ford parts to Jesse E. Smith, local Ford agent, at 125 West Colorado, this week, places the firm in a position to meet the demands of every Ford owner whose machine calls for replacement or repairs.

The stock, which is valued at \$12,000, has been arranged in the newly-altered stock department in such a manner that every part can be reached at an instant's notice, and for those motorists who do not know the names of every part in their cars it is easy to point out just the required part and have it handed out across the counter, that extends for 40 feet and that permits the rapid satisfaction of the customer's needs. A special window display has also been arranged, with one of the centers of attraction a small cabinet that has been made entirely of Ford parts, including ball bearings for cannonballs.

The stock department has been painted silver gray, and the new steel shelving adds materially to the appearance of this branch of the agency. Another point where Jesse E. Smith is able to save his customer's money is in the sale of gasoline, as the volume of his sales permits him to sell gasoline at a cent a gallon cheaper than any other station in town, it is claimed.

### RADIO ON TAXI

A taxicab equipped with radio was a feature of the recent motor show at Madison Square Garden, New York City.

# SHIP NASH CARS BY TRAIN LOADS

### Record Automobile Delivery of One Hundred Eleven Cars to California

Two solid trainloads of Nash automobiles, the greatest single shipment of motor cars in the history of California, have arrived. This record-breaking shipment was inspired by a demand for cars that has exceeded by wide margin all previous experience of the Troy Motor Sales Company.

The two complete trainloads consisted of fifty-foot automobile cars; there were fifty-one cars on one train and sixty cars on the other, carrying a total of 515 Nash automobiles. The piloting of these two record-breaking automobile trains half-way across the continent to California is declared by railroad officials to have been something in the nature of an achievement. Never before in railroad history has so large a single consignment of motor cars been en route to California at one time.

The cars included in the shipment are the new model Nash Fours and Sixes.

Improvements and refinements embodied in the new line of Nash cars have met with instant approval on the part of the public with the result that the factory for weeks past has been oversold. This has resulted in plant extensions, now completed, but, in spite

New signs to be erected by the Automobile Club will be placed on the famous "Mission bell" road-markers which have become familiar to thousands of motorists who have toured in California during the past five years. Wherever there is a mission bell there will also be a brand new automobile sign linking the past of ox carts to the present of motor cars. The Southern California Automobile club will have the responsibility of sign-posting that portion of the El Camino Real which extends from San Diego Mission on the south to San Luis Obispo Mission on the north.

# POSTS SIGNS ON KING'S HIGHWAY

### Auto Club of Southland Starts Work on Former Footpath of Romance

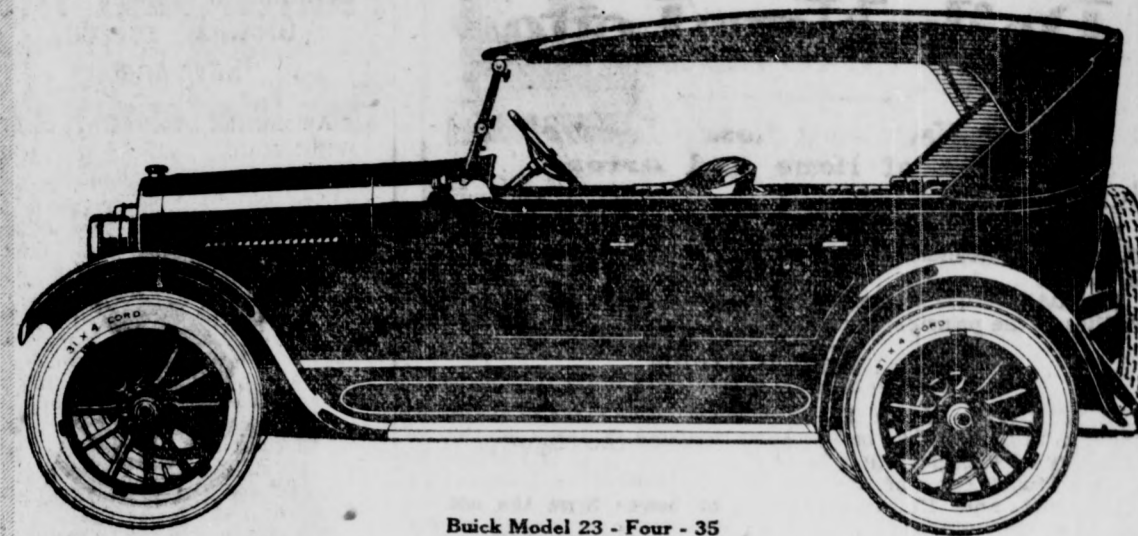
Actual sign-posting of El Camino Real, the "King's Highway" of California, has just been started by the Automobile Club of Southern California according to an announcement from the club road-marking department. This is one of the most significant highway sign-posting projects ever undertaken in America in view of the fact that it permanently establishes the historical mission road along the coast of California and sets the seal of modern road-signing methods of an age old footpath of romance.

New signs to be erected by the Automobile Club will be placed on the famous "mission bell" road-markers which have become familiar to thousands of motorists who have toured in California during the past five years. Wherever there is a mission bell there will also be a brand new automobile sign linking the past of ox carts to the present of motor cars.

Exonous Missions The Southern California Club will have the responsibility of

# THE NEW BUICK

A Car in a Class by Itself!



Buick Model 23 - Four - 35

New 4-Cylinder Touring—\$1075—Delivered in Glendale

An automobile displayed in the dealer's showroom attracts the passerby by its compelling beauty.

Investigation proves to the interested person that the car is all its appearance indicates—that beauty of design and skillful engineering have combined to produce for the particular individual a satisfactory model. When you sit behind the wheel of the machine then you realize fully that the new Buick is indeed in a class by itself; that it satisfies every whim of the most critical motorist.

The new Buick is the old Buick dependability with many added convenient features and improved points of beauty. See it in our salesrooms! Now on display.

## TANNER & HALL

237 SOUTH BRAND BOULEVARD  
GLENDALE, CALIFORNIA  
Phone Glen. 50

When better automobiles are built, Buick will build them

# You Want to Know What You Are Buying

When you go to buy a car, you don't buy so much steel, leather and wood. What you want is so much transportation.

When you buy an automobile tire—it is Traction that you want and not just so much rubber and cord.

With gasoline and motor oils it is more than a liquid for which you pay—it is Mileage—measured by the number of miles a gallon will take you.

Associated Gasoline gives you the mileage you want, and more—it gives steady dependable power under all driving conditions. Every gallon that goes into your tank insures ready starting, smooth and rapid acceleration.

GET ASSOCIATED at this CONVENIENT SUPPLY STATION TOMORROW

COURTESY AND SERVICE—ALWAYS

## C. & B. OIL STATION

ANDERSON BROS., Props.  
Cor. Brand and Colorado Glendale, Calif.



### Oil in Valve Stem Often Checks Leak

A slow leak in the tire valve plunger can be sometimes checked by applying a drop of oil in the valve stem. The oil partially dissolves the rubber, and causes it to seat itself to an airtight joint. Of course the valve is spoiled upon removal, the oil having enabled it to serve the purpose until a new valve could be replaced.

### ECONOMIZE ON GAS

The gasoline bill can be reduced by never allowing an engine to run idle. A great deal more gasoline is used in this way than is suspected. Shut off the engine every time there is an occasion to stop the car for any length of time.

### CARE OF AUTO WHEELS

Wheels should be removed for inspection once or twice a season, new washers replacing the old ones if necessary.

# Urge Early Buying; Way To Escape Auto Shortage

BUYING of automobiles in 1923 is destined to surpass the records of last year. The New York, Chicago and Cleveland shows have caused manufacturers to freely predict that there will be a shortage of automobiles again this year. Last year sales of automobiles to persons who had never before owned a car amounted to about 40 per cent of all sales. This year it is expected that 1,800,000 motor cars will be needed for replacement business alone.

Sales of motor cars through November and December continued well up to the monthly averages for all of 1922. This great volume of business kept many of the factories from establishing a reserve stock. It also prevented the automobile dealers from establishing the usual reserve stocks that ordinarily have been stored through the winter.

These facts are offered for the information of the motoring public. For the last several years, buying of automobiles in the spring months has been heavy.

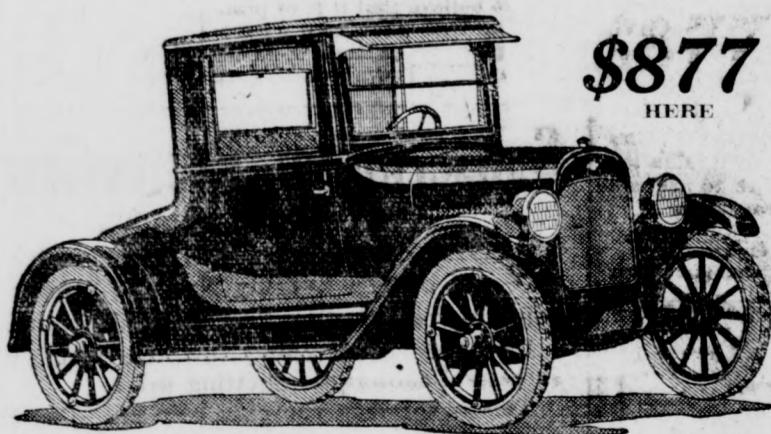
Study of the generally prosperous business conditions, the generally busy industrial conditions, the money market, the agricultural conditions of the south and other elements throughout the country give reason to believe that the conditions in the United States in 1923 will be at least ordinarily busy and prosperous.

All of these things taken together have a bearing on the chance of getting delivery of an automobile at a definite time. They mean that the automobile dealer is going to have difficulty in getting, in the early months of the year, all of the cars that will be needed.

As conditions now exist and as all information indicates, there may be considerable opportunity for dissatisfaction and annoyance to prospective buyers. One or two manufacturers of automobiles have already been advertising an expected shortage of cars.

These manufacturers are urging that the persons who expect to buy this spring shall not delay in placing orders.

# The All Year Car For All Year People The Chevrolet Superior Utility Coupe



The lowest priced, most economically operated single seat Fisher Body Coupe in the world.

Absolute dependability and its surprisingly low price, together with its low cost per mile, WILL DECIDE YOU TO BECOME A CHEVROLET OWNER.

"NOTHING COMPARES WITH CHEVROLET"

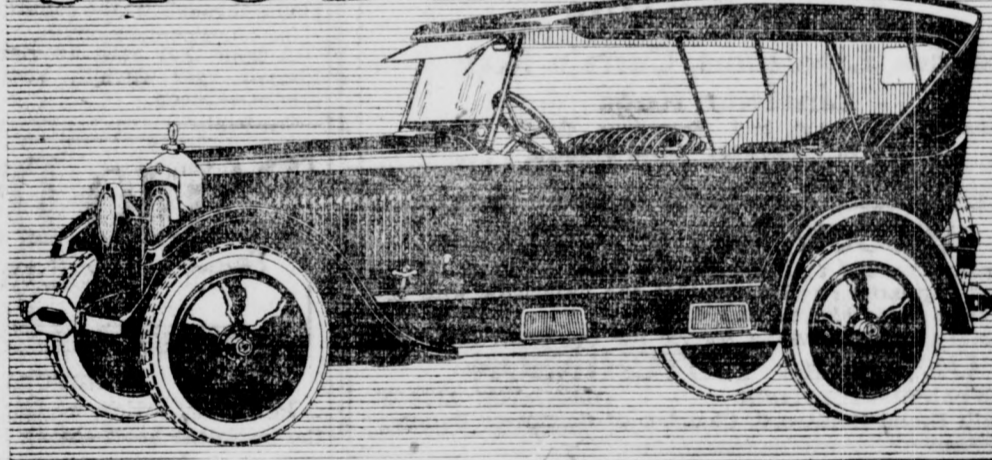
See these wonderful cars on our salesroom floors at your earliest convenience.

Competent, Courteous Salesmen to Demonstrate

## C. L. SMITH

Colorado at Orange Open Evenings Glendale 2443

# STUDEBAKER



23 SERIES BIG-SIX TOURING CAR \$2040

BIG-SIX  
TOURING CAR  
\$2040

### EQUIPMENT

Extra disc wheel complete with tire, tube and tire cover. Bumpers, front and rear. Motorometer. One-piece windshield, automatic windshield cleaner, and glare-proof visor. Rear-view mirror. Walnut steering wheel with new-type spunk and throttle control. Aluminum-bound running boards with corrugated rubber mats and step pads. Aluminum kick plates. Grip handles on body rails. Snubbers. Cool lights, courtesy light, tonneau lamp and combination stop-and-tail light. Cowl ventilator. Clock. Thief-proof transmission lock.

Many people make the mistake of buying a car without enough seating capacity.

Then when they want to take their friends along, the children have to sit on someone's lap, the foot space is all jammed up with luggage, and everybody is crowded and uncomfortable.

The Studebaker Big-Six Touring Car has two comfortable auxiliary seats that fold out of the way. It is a big, roomy five-passenger car except when you need it for seven, and then it's a comfortable, convenient seven-passenger car—something which a five-passenger car can never be. And there is still room for the luggage.

Come in and look at the Big-Six Touring Car. No matter how much you pay we don't believe you can find a more satisfactory car.

Its reliability has been proved in the service of thousands of owners. Correct design, highest quality of materials and precise workmanship are evident throughout every detail of its construction. Equipment is complete—even to an extra disc wheel with cord tire, tube and tire cover and bumpers, front and rear.

The name Studebaker is assurance of satisfaction.



### PRICES OF NEW MODELS—HERE WITH TAX PAID

LIGHT SIX		SPECIAL SIX		BIG SIX	
Touring	\$1190	Roadster	\$1495	Touring	\$2040
Roadster	1190	Touring	1525	Speedster	2185
Coupe Roadster	1490	Club Roadster	1525	Coupe 4-Pass.	2275
Sedan 5-Pass.	1795	Coupe 5-Pass.	2195	Coupe 5-Pass.	2265
		Sedan 5-Pass.	2375	Sedan Speedster	3155

## PACKER AUTO CO.

SAN FERNANDO VALLEY DISTRIBUTORS FOR  
STUDEBAKER CARS

Colorado and Brand

Glendale 234

THIS IS A STUDEBAKER YEAR















# GREAT BUILDING PROJECT STARTS

Sum of \$100,000 to Be Spent at Wing Orange Grove on Homes

A \$100,000 building project is announced by Marvin Smith, tract manager, as being under way on the Wing Orange Grove development at 1200 East Colorado street.

This project embodies five six-room stucco houses of the most modern type, on lots 64, 65, 66, 67 and 68 along the beautiful 100-foot Sycamore Canyon road now going through. The houses are at present under way.

These five houses will cost an average of \$4500 each and will contain kitchen, breakfast room, dining room, living room, two bedrooms and sleeping porch. They are being erected by A. G. Smith of Glendale, from plans and materials purchased from the Bentley Lumber Company. L. L. Patch, who has had over ten years' construction experience in Glendale, is the builder.

**Work Starts Monday**  
A further phase of the \$100,000 building project is announced in the erection of five more dwellings on the Wing Orange Grove tract, work to start Monday, March 19. These will be five-room stucco and frame houses, and will be erected by F. W. Glass, of Los Angeles.

Three other houses are also about to start up on this tract, and notice of still others is expected soon, states Manager Smith in whose opinion this tract will be completely built up in a time that will establish a record for the city.

"The significance of this construction is obvious," Mr. Smith states. "People know the value are here. It is particularly obvious when it is known that general real estate men have purchased lots in the tract, among them E. G. Warren, who has bought eight, and Charles Kauson, who has bought one. Real estate men buy only when they know the values are there, for they are on the inside of the game."

"We are eighty per cent sold out," states Mr. Smith, "and present indications make it appear that we will be completely sold out in another week. Opportunity will sound either now or never, in this tract, for the buyer of lots at original prices."

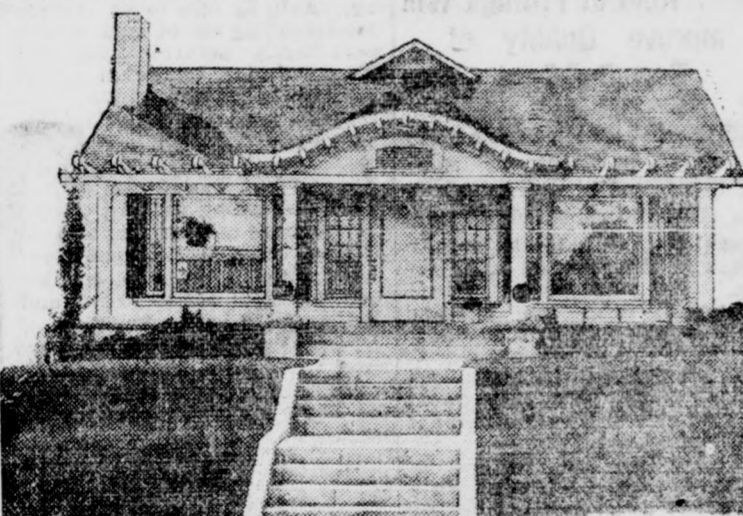
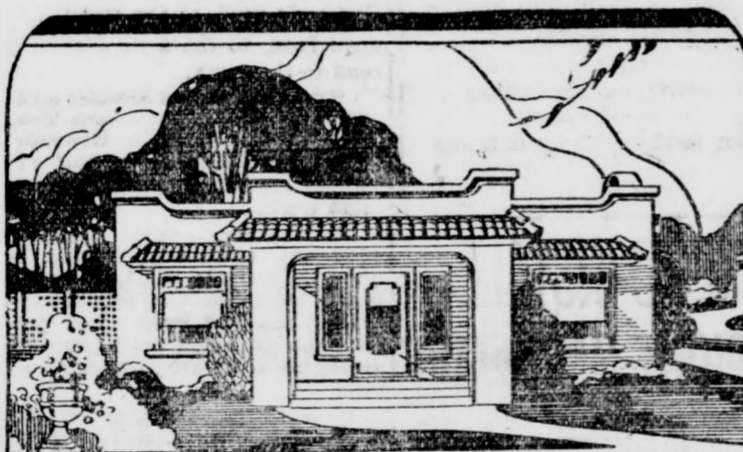
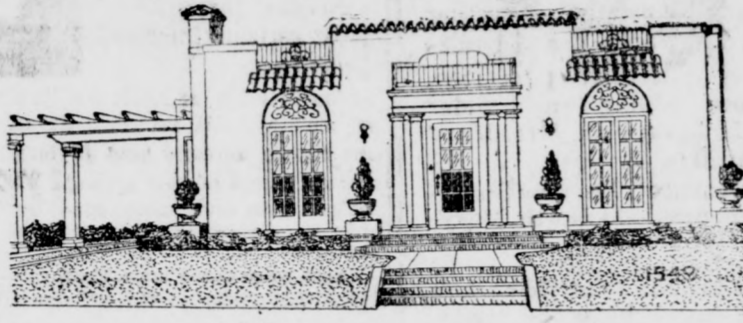
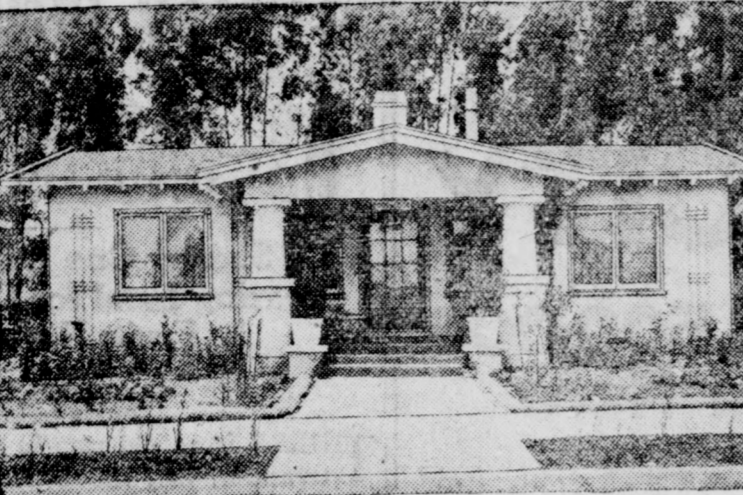
**Re-sales Being Made**  
"Already many of the lots have re-sold for handsome profits. There are, however, a few choice selections left at \$1400 and up. Our liberal terms of one-fourth down and the balance in three years make the purchase of one of these fine lots particularly easy on the pocketbook."

"We are three blocks from the new high school, and only two blocks from the Broadway Grammar school, the trolley line and the bus line. Sam Seelig is putting up a new store just two blocks from the tract, at the corner of Colorado and Adams."

"The buyer must decide whether he wants to get his lot in a close, rapidly developing section, such as the Wing Orange Grove tract, with every modern convenience close at hand and the heart of Glendale at our very doors, or whether he is content to go far out and wait for these improvements to come."

The tract office of the Wing Orange Grove development is at 1200 East Colorado street, and the telephone number is Glendale 337-M. The office, states Manager Smith, will be open all day Sunday.

THESE pictures show the five roomy and attractive stucco houses being erected by A. G. Smith of Glendale, on the Wing Orange Grove tract. Each house is a modern six-room structure, containing the most advanced ideas in refinements and built-in features, yet no two are similar in appearance. The cost averages \$4500 per house, in addition to the price of the lot. Plans, specifications and materials were furnished by the Bentley Lumber Company. L. L. Patch is the builder. The houses are being erected on the east side of the new 100-foot Sycamore Canyon road, already through and soon to connect the foothills with Los Angeles by a superb boulevard passing right by the doors. Each house contains a separate breakfast room, a dining room, living room, two bedrooms, a kitchen, a sleeping porch and other features.



# BIG ADVERTISING HELPS GLENDALE

Walter H. Leimert Tells of Plans for Development Of Bellehurst Park

Sincere appreciation of the splendid co-operation of the Glendale Chamber of Commerce and the Glendale City Council in the opening of Bellehurst Park, was expressed by Walter H. Leimert yesterday. "The opening of our big advertising campaign in all the Los Angeles papers started on Thursday," said Leimert. "Telegrams wishing us good luck in this important enterprise of subdividing and developing the beautiful Thom estate have been pouring in from many of our old friends in northern California who are familiar with the work of the Walter H. Leimert Company in the San Francisco Bay region. None of these messages was more appreciated and valued than the very cordial letters of welcome from the Glendale Chamber of Commerce and the Glendale City Council."

**Lots of Advertising**  
The present Leimert Company advertising campaign will far surpass any former campaign ever attempted for a high class subdivision in Southern California, according to reliable reports. Full pages are now appearing daily in all the Los Angeles papers as well as the Glendale papers. As all the advertising of Bellehurst Park is keyed on the many advantages of Glendale as well as upon the unusual beauties of this beautiful tract, it is obvious that the immediate results will greatly benefit the entire city.

In the preliminary selling campaign to Glendale only, which has occupied the last two weeks, the total volume of sales had passed the \$165,000 mark by last Wednesday night. To date the total is well beyond the \$200,000 goal set by the Leimert Company at the beginning of the pre-opening sale. Now that the volume of buyers are carrying the message to the entire southland the volume of sales is confidently expected to triple or quadruple at once. The many Glendale people who have purchased lots already are now in an excellent position to receive the benefit of this gigantic demand for these choice homesites.

There are still many fine locations left for early buyers today, as the real stampede will hardly begin before 2 o'clock in the afternoon. However, many buyers were arriving yesterday afternoon and over \$40,000 in sales was reported last night to Los Angeles people.

**System Prevents Delay**  
Sole signs posted in the center of every lot on the tract. In all cases where the lot is still available the word "sold" is covered with a card giving the price of the lot and the terms. Buyers who have difficulty in finding sales representatives can tear off the card on each lot they select and present it at the tract office with the deposit and the lot is theirs. This system will prevent any delay or inconvenience in securing desired locations.

It is just beginning to dawn on many people what a really fine section of the city Bellehurst Park is destined to be. Under the skilled control of the Walter H. Leimert Company the future development of this marvelous tract will soon make it the most desired and most talked about community of fine homes in all the southland. Construction work is now rushing ahead under E. W. Tuttle, Los Angeles manager of Bates & Borland Inc. The very high type of street improvements and the full restrictions insisted upon by Leimert are ample guarantee of the immense future value of every lot in the tract.

## Vatican Offers to Buy Holy Relics From Soviet

ROME, March 17.—Relations between the Vatican and the Soviet government are not improving despite all the efforts made by the Holy See. Proof is seen in the fact that the Vatican has felt obliged to appeal to the British government to support its point of view at Moscow regarding the still unsolved question of the Catholic church properties in Russia. Once more the Vatican is offering, through London, to buy the religious treasures seized by the soviet government in Roman Catholic churches. It is very significant that the Vatican should have had recourse to England, while it already was in direct communication with the Moscov government, through the Russian trade delegation in Rome, and had means of contact through the several Catholic organizations which have been sent to Russia for the relief of the starving population.

The fact is that lately the Vatican and the Soviet Diplomatic corps have been driven apart by the difference concerning the Armenian question. The Vatican is very anxious that the Armenian people should be assured a maximum of independence and freedom from persecutions, while the soviet government is supporting the Turks in their policy of extermination. There are also rumors that the hostile attitude adopted by the Moscov government and the Third International against the Fascist regime in Italy has contributed to the growing coldness of the Vatican toward the soviets, as the Pope is very favorable to the Fascist government in Italy.

## England in Fear of Anti-Tobacco Drive

LONDON, March 17.—England fears an anti-smoking campaign from the Quakert Microscopical Club has ruled against smoking at its meetings, and the matter has become one of national concern.

## Deny Oregon Claim to Oldest Printing Press

HONOLULU, March 17.—Refutation of the common belief that the printing press now in possession of the Oregon Historical society is the first to have been brought west of the Rocky Mountains is made in a paper by Professor Howard Ballou, presented recently to the Hawaiian Historical society. The press of the Oregon society is a small hand card press and was claimed by that society to have been the original printing press brought out by the missionaries who came to Hawaii in 1819 on the "Thaddeus." In 1839, it was declared, it had been taken to Oregon by the late E. O. Hall.

Professor Ballou, however, declares that the press in the possession of the Oregon society is not the original one brought out by the "Thaddeus," but is one which was brought here in 1839 and never used here. Professor Ballou quotes from letters left by Mr. Hall in proof of his point.

## Fat May Hait Woman's Trial on Theft Charge

DETROIT, March 17.—Weighty reasons were given to Judge T. M. Cotter for granting a postponement of Carrie Gatt's trial. She is 23 years and weighs 495 pounds and is charged with having received stolen goods. A week ago she was taken ill and has since gained forty pounds. This now makes it wholly impossible for her to leave her house without tearing down part of the wall, her attorney said. He added: "Her trip to the court room would require the assistance of several men and a moving van." The superintendent of the court house testified it would be necessary to remove the revolving doors at the entrance and that none of the court house elevators was large enough to convey the woman to the fourth floor room where Judge Cotter holds court.

## Will Oust Cooties From Nevada Camps

CARSON CITY, Nev., March 17.—A bill to oust cooties from Nevada bunkhouses passed the assembly today despite the arguments of assemblymen that a cootie cannot be controlled by law.

The bill relates to mining camps and those devoted to construction works and other activities where laborers are housed. "Bunkhouses must be clean, airy and free from vermin," the bill reads. Opponents of the measure declared that the law would promise something for labor that it cannot deliver.

## Connecticut's Oyster Beds to Be Revived

NEW HAVEN, March 17.—Hundreds of little boats that once dotted inlets of Long Island Sound and are now idle in scores of fishing hamlets will be put overboard again if promises of the state shellfish commission hold true, for the commission says "it is both practicable and possible to restore Connecticut's once powerful oyster industry and even to render it greater than ever before." Thousands of men once worked in the industry. New Haven being the center of the greatest oyster region on earth, and Connecticut oysters went everywhere in the United States and crossed to famous restaurants in London and Paris. Then came sudden blight upon the industry, which shut down all but half a dozen oyster concerns and after long delay the state took up the burden of learning why. By what seems wizardry the state shellfish commission has managed in the last year to create an oyster "set" where none ever existed before and increased it in spots where "set" had existed. "Set" is the technical term for oyster spawn, which, in time, de-

## Girl Gives Him Short Meat Ration, Beat Her

DETROIT, March 17.—The inability of Steve Dozoros to sustain his asserted reputation as a trencherman cost him \$25.

Steve was arrested on a charge of disturbing the peace preferred by his sweetheart, Sophia Wilczynski, at whose home he rooms and boards. He had beaten Sophia with a stick, Steve explained to the judge because she failed to provide his usual evening meal ration of four pounds of meat. The court questioned Steve's capacity, so an officer accompanied Steve to a nearby restaurant, where he was given a chance to "make good." The officer reported Steve consumed "only" 1.5 pounds of veal, eight large hotogna sandwiches and one quart of milk.

## Threatens Coal Man With Gun, Pays \$50

BOSTON, March 17.—John H. D'Este, 40, of 51 Manley street, East Boston, used a new system in trying to obtain coal. He threatened Reginald Johnson of 364 Winthrop street, Winthrop, with a loaded revolver when the latter refused to honor a doctor's prescription for coal at the Massachusetts Wharf coal yard, East Boston. D'Este was fined \$50 in the East Boston Court for the threat.

# SIXTEEN REASONS

Why You Should Live In

# FLINTRIDGE

"Southern California's  
Choicest Residential Park"

- 1. Distinction**—Flintridge is Glendale's supreme suburban community of distinction.
- 2. Improvement**—At Flintridge all utilities and conveniences are completely installed, paved streets and curbs, planted parkways, water, gas, electricity, telephones, schools, stores and transportation.
- 3. Stores**—The postoffice and merchants maintain daily delivery service throughout Flintridge.
- 4. Accessible**—Flintridge is only 15 minutes from Glendale and Pasadena—35 minutes from downtown Los Angeles.
- 5. Development**—Flintridge is not a subdivision—it is a completely developed community.
- 6. Maturity**—The pioneering stage in Flintridge was passed years ago with the erection of scores of homes ranging in cost from three thousand to three hundred thousand dollars.
- 7. Choice**—Flintridge comprises the most accessible part of the matchless foothill region—above the frost and fog belt.
- 8. Scenic**—Flintridge is famous for its picturesque setting, its cozy cottages and magnificent estates.
- 9. Prices**—Flintridge prices are less per acre than 75% of the "subdivisions" on the Glendale market today.
- 10. Recreation**—Flintridge is a great natural playground—golf, tennis, riding, hiking and motoring.
- 11. Children**—Flintridge provides a wholesome, clean environment for youngsters—modern school facilities.
- 12. Restrictions**—Flintridge homes are forever protected against undesirable encroachments.
- 13. Spirit**—There is a genuine, cordial community life at Flintridge.
- 14. Contrast**—A home in Flintridge provides a happy relief at the end of a busy day in town.
- 15. Freedom**—Flintridge combines the freedom of suburban life with all the conveniences of the city.
- 16. WARNING—THERE IS ONLY ONE FLINTRIDGE—THERE NEVER CAN BE ANOTHER—THE TIME TO BUY IN FLINTRIDGE TO THE BEST ADVANTAGE IS WHILE ORIGINAL PRICES STILL PREVAIL AND WHILE CHOICE LOCATIONS ARE STILL AVAILABLE.**

Drive out to Flintridge Today or Sunday—Visit the attractive Model Country Home, Completely Furnished, now open for Public Inspection.

## FLINTRIDGE SALES COMPANY

727 Title Insurance Building LOS ANGELES Telephone: 10601, Main 685  
Flintridge Office—Tel.: Fair Oaks 212

HOMES — HOMESITES — ESTATES

# SUNSET GROVE

## Full Size Lots \$975 up

### \$100 Cash—\$20 and \$25 per mo.

It has been your dream to have a home in a high location overlooking the city, and yet accessible and level.

Sunset Grove will meet your requirements, and \$100 cash is all that is necessary at the present time to secure one of these beautiful homesites.

This will be the first step toward realizing your dream. By the time you have your lot paid for, it will be worth perhaps twice as much, and you can borrow enough to erect a fine home.

## Builders of Good Homes—

Sunset Grove offers an opportunity to builders to secure lots for future use with a small investment now.

Homes in the Northwest Section sell very readily, and in Sunset Grove builders can offer much better house values than where the lots are higher.

### Lots Covered with Trees—Restricted

Come and see Sunset Grove. Salesman on Tract Sunday.

Drive out Kenneth Road, Grand View Avenue and Tenth Street, to Tract Office, south side Tenth Street, beyond Linden Avenue. Week days call at office.

# HAMLIN & HEPBURN

GLENDALE 996-J 203 W. BROADWAY



### EMPHASIZE HOPE OF FUTURE LIFE

Forest Lawn Mausoleum to Be Inspiration for the Christian Faith

One of the most beautiful edifices in the world is now in construction in Glendale.

Forest Lawn Mausoleum, which will cost approximately \$1,300,000, is now about half completed. Last year also \$225,000 was expended upon it. This year appropriations provide for the expenditure of as much more.

The corner stone was laid in 1917 but construction was delayed because of the war. This was resumed in 1919 and has been actively in progress ever since. Two of the units are now ready, the third is four-fifths finished, the fourth is about a fourth finished and the commencement of the fifth unit is contemplated. It will be several years, however, before the final dedication.

The Hanging Gardens of Babylon furnished the model for the architecture. Upon the south slope of a hill the mausoleum will rise in five terraces, 220, 200 and 180 feet long, to the top of the hill. This will be surmounted by an open court and chapel.

Beauty and permanence are emphasized in the architecture. Building materials are concrete, granite, marble, stained glass, and bronze. These are being combined in such a manner that the structure will be practically indestructible while, at the same time, delighting the vision.

**Solid Foundations**  
Foundation footings of concrete are sunk deep in solid rock. It is believed that they could not be budged even by an earthquake. Exterior walls will be sturdy blocks of granite of a permanence equal to the pyramids.

Plans for the interior provide for long corridors in the first and second terraces, two corridors in the third terrace, three in the fourth, and an open circular corridor around the memorial court and open air chapel upon the summit.

Interior walls will be of a harmonious combination of various kinds of marble, side walls will be largely of white Alabama marble, and the floor boards will be of verde antique marble. Margins on each side of the floor, which is paved down the center with onyx mosaic, will be cedar. Tennessee marble is being used to outline windows and doors. Pillars of polished marble serve as portals to the marble staircases which divide each terrace.

Bronze, the most durable metallic compound, is the only metal in the interior. This is conspicuous in a number of embellishments.

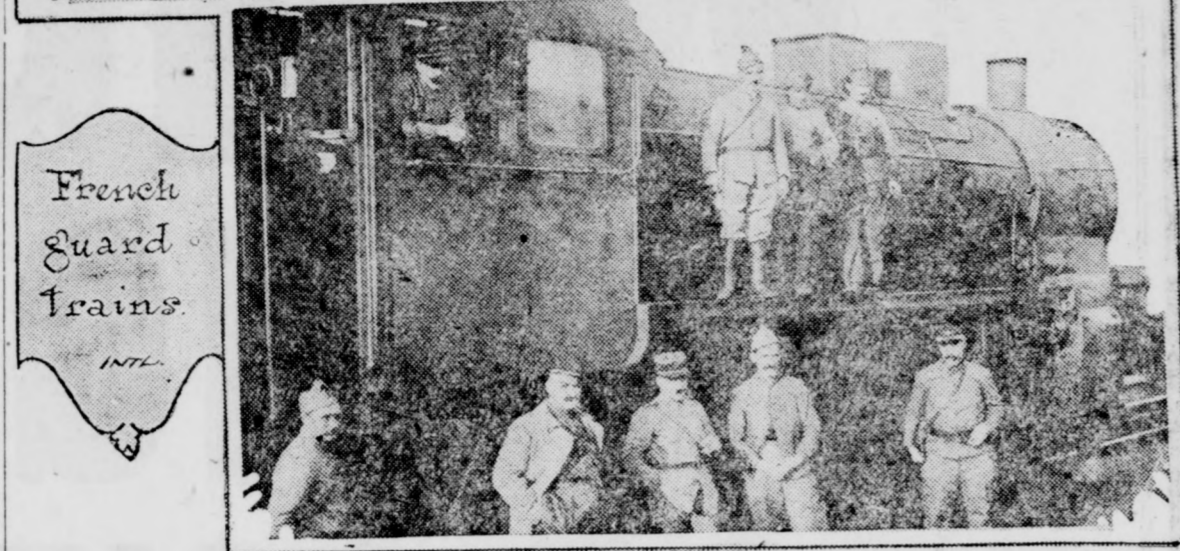
**Gloom is Banished**  
Art treasures of the world are being ransacked for statuary beautiful enough to be given a

### FRENCH TROOPS ON GUARD OVER GERMAN TRAINS

President Of Dusseldorf State Makes Protest To Newspapermen



German protest.



Dr. Grukmer, president of the Dusseldorf state, standing at the right, who had been arrested by the French and later released, is shown making a speech of protest to Dutch and German newspapermen at Essen. Seated in the center is Dr. Meurer, the mayor of Essen. This photograph was made in the room in the Essen hall, in which the former kaiser held a council of war during the world war. French troops are shown guarding German trains.

The belief that death is but a preparation for more abundant life is emphasized in the architecture. Gloom is forbidden. Sunshine filtering through the Tiffany arched stained glass windows, forming the roof of each terrace, causes the marble walls of the interior to reflect a warmth which is typical of hope.

Nature will be permitted to furnish her share toward the beautification of this edifice. Each corridor will contain numerous potted plants which will give quiet reminder of the recurrence of springtime. Terraces will be bedecked with blooming flowers, exterior walls will be trellised with vines and the hillside flanking the structure will be landscaped in harmony with the general scheme of Forest Lawn Memorial Park.

A symphony in stone, this mausoleum is expected to stand through all time as a testimony of the victory of the Resurrection.

A philosopher said that if you want to be happy you must be surprised at nothing.

When a man tries to get something for nothing, he succeeds in acquiring experience.

### Halt Burial To Probe Report Of Poisoning

CHICAGO, March 17.—A woman's funeral procession was halted abruptly here by the coroner, who declared he had received information she had died of poisoning instead of tumor, as the burial permit showed. She was Mrs. Louise Cornell.

The coroner said repeated telephone calls at his office during the funeral services had convinced him interment should be postponed. An inquest will be held, he said.

**Set New Date For Slayer's Execution**  
SANTA ROSA, Cal., March 17.—Abdul Mohammed, saved from the gallows by injunction which was subsequently set aside by the supreme court, must hang April 13 for the slaying of Aile Akbar, Hindu. Judge Thompson in superior court set the new date for the hanging.

### Postmaster General Makes Economy Plea

WASHINGTON, March 17.—"The strictest economy commensurate with public convenience" is urged by Postmaster-General New in messages to postmasters throughout the country. Curtailment of overtime and extra service will be necessary during the remainder of the fiscal year, as a result of a shortage of funds, New said.

### Deny Intention To Seize German Metals

WASHINGTON, March 17.—The French government has disclaimed any intention of seizing manufactured metal products in the Ruhr, but will continue to prohibit the export of such products into unoccupied Germany, Ambassador Herriek advised the state department.

When a man tries to get something for nothing, he succeeds in acquiring experience.

### BUILDING THREE NEW TILE HOMES

Contractor Rigdon Claims Envious Record For Selling Houses

Contractor Nathan Rigdon of 224 West Deran street stated recently that he had built 325 houses in Southern California, about 200 of which were in San Diego, and that only fifteen of them had remained unsold when completed.

Three hollow tile houses are now being built at 637, 640 and 641 Pioneer drive by Mr. Rigdon. These will consist of a frame structure with additional walls of hollow tile surfaced with plaster. Interior finish will be quartered figured gum.

According to Mr. Rigdon, he has found it necessary to instruct real estate agents to keep prospective buyers of the premises until these houses are completed in order that the progress of their construction may not be retarded. He said that they would be ready for occupancy in four weeks.

### Six Injured When Flames Sweep Home

PITTSBURGH, Pa., March 17.—John Zarao, 37, his wife, Annie, 35, and their three small children, Josephine, Guy, Mallie, and Patrolman Rufus Pinkney were burned when a fire damaged a building. Zarao and his wife may die.

### RECORDERS URGE STANDARD FORMS

Adopt Resolution Favoring Documents Adopted by Realtors

Standardization of all legal forms to expedite the work of recording and safeguarding legal documents was urged in a resolution unanimously adopted by the California County Recorders' association in convention at Sacramento, following presentation of the matter by Chris R. Jones of Sacramento, vice-president of the real estate organization.

Recently the California Real Estate association put into use among the brokers of California standard forms for exclusive authorization to sell and deposit receipt, which forms were adopted following a joint conference of the realtors with the title men, attorneys and the real estate department. Standard forms for deeds, trust deeds and exchange agreements widely used by realtors will be worked out this year by the California Real Estate association, according to the association.

### SILENCER NEEDED

Some time ago I took an old colored man to the picture show for the first time. When he came out I said: "Well, uncle, did you enjoy the picture?" "Oh, yes," he said; "the picture was all right, but the piano made so much noise I couldn't hear a word they said."

### More Arrests In Probe Of Naturalized Citizens

SAN FRANCISCO, March 17.—Two new arrests yesterday featured the investigation of alleged widespread naturalization frauds.

A. J. Veltoes, an Oakland man, was arrested after a thrilling chase in that city and brought before United States Commissioner Krull. Veltoes is charged by department of justice agents working on the probe to have been a "fixer" for naturalization examiner, and when questioned before Krull, Veltoes admitted he had handled at least fifty cases for Littleton, receiving fees from \$5 to \$25 and charging that Littleton received from \$75 to \$150 for certifying aliens for naturalization.

Angelo Torre, a waiter, was arrested as a result of Veltoes story and two other men who acted as "witnesses" when he was naturalized in 1921, were also being sought.

### Boy Scouts to Hear About Wild Flowers

A. G. Barr, naturalist, is to give an illustrated lecture on "Southern California Wild Flowers" on Monday night, March 19, at the meeting of troop leaders of the Verdugo Hills District Council, Boy Scouts of America, in Bolton Hall in Tujunga. The roundtable will open at 8 o'clock, and Burbank, Glendale and Eagle Rock leaders are urged to meet at 7:30 o'clock at the scout office at 103 1/2 South Brand boulevard.

Deafness is more common in cold than in warm climates.

### LET CONTRACT FOR GREAT RESERVOIR

Will Look Like Natural Lake; Improvements by Alta Canyada Concern

Construction work on the million and a half gallon reservoir at Alta Canyada will start in the near future, following the awarding of the contract this week to Clarence P. Day of Pasadena. The contract was let by the Alta Canyada corporation.

Plans for the reservoir call for a structure built in the form of a pear, to conform to the contour of the plateau upon which it is located. The reservoir will have the appearance of a natural lake and will add greatly to the beauty of its surroundings.

This reservoir is the fourth located on these estates, three smaller ones being already used for conserving part of the water flowing from Alta Canyada's canyon.

Plans are also being worked out for the fine new Casa Canyada hotel and sales in the suburb are reported most gratifying.

**MA WANTS SILENT DRAMA**  
"What do you hope to be when you grow up, Bobby?" "A film actor, miss."

"Why?" "Because mother is always telling me that I should be seen but not heard!"

Do your shopping in Glendale.

# Glendoaks

formerly Scholl Canyon

Many families visited GLENOAKS following our announcement last week that the property was to be offered for sale.

Many Selected Their Homesites

THE OPENING PRICE of these homesites [many 1/2 acre in size]

of \$2000

is low in light of the future

This is no time for watchful waiting in GLENDALE

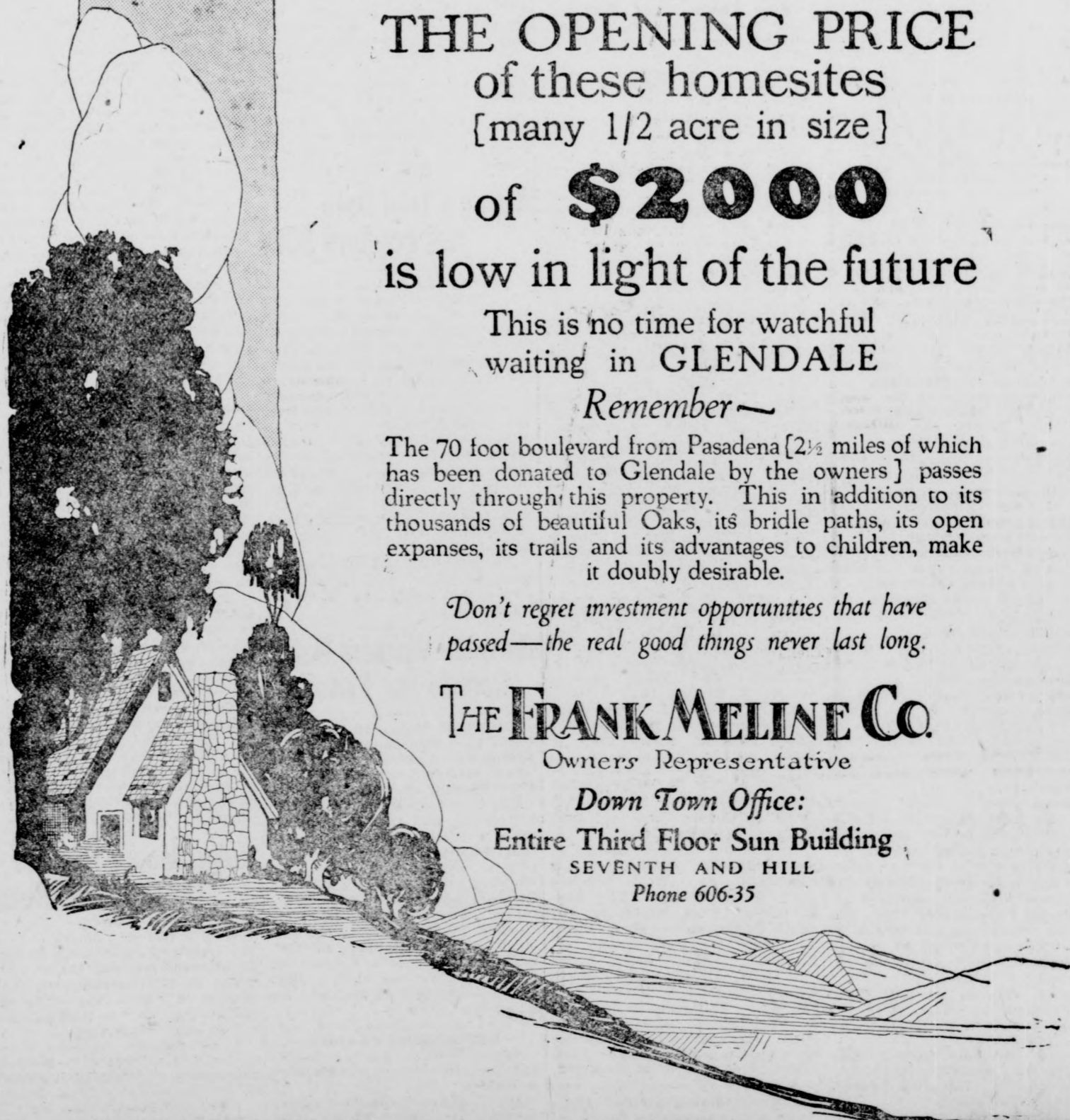
Remember—

The 70 foot boulevard from Pasadena [2 1/2 miles of which has been donated to Glendale by the owners] passes directly through this property. This in addition to its thousands of beautiful Oaks, its bridle paths, its open expanses, its trails and its advantages to children, make it doubly desirable.

Don't regret investment opportunities that have passed—the real good things never last long.

THE FRANK MELINE CO. Owners Representative

Down Town Office: Entire Third Floor Sun Building SEVENTH AND HILL Phone 606-35



Courtesy Extended to All Realtors

# Benmar Hills

## BURBANK

### The City Beautiful

Your Home a Foundation Stone In the Building of a Great City

Burbank—THE CITY BEAUTIFUL. That is her destiny—to be known as a completely planned, perfectly balanced, model American community!

This vision, day by day is coming true. You may see the progress from one visit to another at Benmar Hills. For it is on this superb property, which takes in the western part of Burbank and sweeps from the San Fernando Boulevard to the hills, that Burbank will expand into a flourishing city of 100,000 people.

RIGHT NOW there is open the opportunity for you to make your home a foundation stone in this community structure. Buy at Benmar Hills NOW and you will be one of the initial property owners—one of the pioneer builders—and therefore one of those who will profit most when the city has grown up around you.

The city of Burbank, officially and as a community of loyal, energetic and far-seeing citizens, is behind this great movement.

The city has built a \$250,000 high school on a Benmar Hills Site. She has voted \$40,000 for the development of a lake in the tract reserved for a Benmar Hills foothill park. She has accepted deeds to a 20-acre site for a model civic center—130 acres for a foothill park, substantial areas for public auto park, public market, athletic field and children's playground, and she has sanctioned the elaborate and beautiful street system planned for Benmar Hills. The actual development of Benmar Hills is in the hands of the Southern California Corporation, composed of men of the highest business and professional standing. You have their assurance that Benmar Hills is amply financed and is WELL ADVANCED on a program of rapid improvement.

Come out today and see for yourself this city beautiful in the making—and choose the site for your home within its boundaries.

Drive out San Fernando Boulevard to the Western part of Burbank

Southern California Corporation

211 Junior Orpheum Bldg.

Phone 822587

206 East San Fernando Blvd.—BURBANK CITY OFFICE—Ph. Burbank 295





### OFFERS HOSPITAL TRACT FOR SALE

#### Sanitarium Site Destined to Become Heart of City, Is Claim

The decision of the owners of the Glendale Sanitarium and Hospital to erect a new building on a site on the outskirts of Glendale has opened the way for the placing on the market of the tract on East Broadway now occupied by the sanitarium, and numerous offers have been made by experienced developers and realty men for the property, which has finally been entrusted for sale to the Guy M. Rush Company, who have now perfected arrangements for selling the property under the name of the Glendale Center Business Tract. It is the assertion of Guy M. Rush Company that the present site of the Glendale Sanitarium and Hospital is destined to become the business center of the city, and they are urging this point in placing the tract before the buyers of this and other cities in the Southland.

Numerous inquiries for portions of the property have been received by the sanitarium during the past three months since it became known that they were to change their location, and it has been seriously considered as the new civic center for the City of Glendale.

"Only at intervals in the history of the growth of any thriving city is there a change in the trend of its business district which offers such an extraordinary opportunity to make tremendous profits," says Mr. Rush.

**Logical Center**  
"Those people with foresight, vision and experience will undoubtedly grasp the opportunity. Those who have made a study of the situation concede that at this point is the logical and natural business center of a city of at least one hundred thousand people and those who have watched the value of Glendale property double, triple and quadruple in the last few years will realize that when this magnificent block is thrown open to the general public, the stimulus to Broadway growth will create a higher level of values not only in the surrounding property, but for this property itself, and that it will be only a matter of a

### Canned Milk and Cocoa Used to Paint Walls

OLIVET, Mich., March 17.—Miss Georgia Ely, of Olivet, just returned from Poland, where she did missionary work, declared that quite as important as the sending of food was the necessity of someone being on the ground to see the natives knew what to do with it.

"I went into one town in Poland," Miss Ely said, "and found that almost every house was repainted in brown. I noticed that the paint seemed sort of sticky, and I investigated. I found that a shipment of cocoa and one of condensed milk had been sent from America, but the natives, unfamiliar with it, believed it to be paint, so they mixed the two and coated their houses."

short time until prices will again double and triple.

"Several days ago one of the best known community development and landscape engineers on the Pacific coast, Mr. Mark Daniels of San Francisco, a man whose experience has been gained by the development of the civic centers of more than forty cities, visited Glendale, and when his attention was called to the location of the Broadway Business Center Tract and he was told that it was to be thrown open to public sale, he stated without hesitation that if Glendale only followed its natural trend, as he had observed in many other localities, the section between Glendale avenue and Brand boulevard on Broadway and between Wilson and Harvard avenues should become the real business center of the city.

"At the opening of this property, which will take place in the near future, conditions will be created for the benefit of purchasers with respect to prices, terms, building discounts and rental returns during the period of occupancy by the sanitarium, so that in the opinion of those familiar with development of this kind, the entire property, consisting of thirty-eight lots, including a thirty-room apartment house and a six-room cottage, will be sold within forty-eight hours.

#### PROPER OR IMPROPER

Would it be quite proper to call a legislative leader a bloc head?

**SHE KNEW HIM**  
Ben—"I think I have a cold, or something, in my head."  
She—"Must be a cold."

### MARCH BUILDING PASSES \$350,000

#### Steady Growth of City Shown by Permits Issued To Contractors

Glendale permits this morning passed the \$350,000 mark for the first half of this month. This sum makes the total for the year so far \$2,394,380.

- Permits issued recently include the following:
- G. R. Bradbury, 4 rooms and garage, 1173 Rosedale avenue \$ 2,800
  - G. R. Bradbury, 3 rooms and garage, 1170 Rosedale avenue 1,800
  - G. R. Bradbury, 3 rooms and garage, 1166 Rosedale avenue 1,800
  - Lizlie F. Blodgett, addition, 807 Orange Grove avenue 300
  - T. A. Schneitz, garage 1025 Albert street 250
  - C. O. Poore, garage, 1332 Idlewood street 200
  - James Riley, garage, 1001 East Wilson 200
  - G. H. Hoffman, garage, 522 West Harvard 150

#### Clear Building Site For 2-Story Brick

Surveyors are setting stakes and establishing grade for a two-story brick building on the east side of Glendale avenue, just south of Broadway, to be erected by George Caldwell of Los Angeles, who has owned the lot for a number of years. There will be two store-rooms on the lower floor and offices and apartments above.

Construction will begin at once. The estimated cost of the building is \$15,000.

#### Order Provides for Bay City Naval Base

WASHINGTON, March 17.—Establishment of the naval operating base at San Francisco, recommended in the Rodman board report, was provided for in an order signed today by acting Secretary of the Navy Roosevelt.

### Slain Girl May Have Been Tool of Gang

NEW YORK, March 17.—The possibility that Dorothy Keenan King, the beautiful model found chloroformed to death in her apartment on Thursday, was a tool for a gang of the underworld, was being investigated by police today in their efforts to unravel the mystery surrounding the murder.

Although costly articles of jewelry and an expensive fur coat were missing from Miss King's room, the theory was advanced that the robbery is a blind, and that the model was killed so as to keep her silent on a possible expose of the activities of the gang of crooks, composed of both men and women.

A black comb, described as a "man's comb," which was found near the bedside of the slain girl, figured in the investigation today. The police believe it dropped out of the murderer's pocket as he forcibly administered the deadly anesthetic to his victim.

The mother of the dead model has given the authorities the name of a man who she believes may know how her daughter died.

"This man is capable of anything," Mrs. Keenan cried. "My daughter feared this man. She showered money and gifts on him. He told her he had once committed murder and escaped any penalty. I know she was in terror of him."

#### Centenarian Lived in One County 80 Years

ROCK ISLAND, Ill., March 17.—This county's only centenarian, Mrs. Elizabeth Besenberg, is dead at the home of a son at Colona, near here.

She had been a resident of Rock Island county for the last 80 years and is survived by five sons, fifteen grandchildren and nine great-grandchildren.

#### WHO SPOKE?

Cross-eyed judge lines all three cross-eyed prisoners before him charged with disturbance.  
"What's your name?" he asked the first man.  
"Jim Dugan," says the second.  
"I didn't ask you," says the judge.  
"I didn't say anything," answered the third.

The battle of Waterloo lasted only eight hours.

### POLICE BAFFLED IN PRIEST HUNT

#### Mystery Deepens In Search For Vanished Pastor As Time Passes

ST. LOUIS, March 17.—Baffled in a maze of theories and lack of a single definite clue, authorities continued the search for Rev. Father John A. Varniak of Virden, Ill., which was still in its mystifying and practically hopeless state.

Friends of the missing pastor who have aided authorities for eleven days in a continuous search of roads in Illinois and the banks of the Mississippi river are about to abandon hope of ever finding the priest alive.

Recall Hefflin Case  
SAN FRANCISCO, March 17.—Attorneys for William A. Hightower, now serving a life sentence in San Quentin prison, upon conviction of having slain Father Patrick Hefflin, a Colma priest, took steps today to investigate the alleged similarity between the slaying of Father Hefflin and the disappearance of Father John A. Varniak of Virden, Ill.

Father Hefflin was decoyed from his parish house at Colma on an errand of mercy from which he never returned. He was taken away in a small automobile. A week later through the instrumentality of Hightower his body was found.

#### Both Birth and Death Rates Gain in Hawaii

HONOLULU, March 17.—Both the birth rate and the death rate in Hawaii showed considerable increases in 1922 as compared with 1921, according to statistics compiled by M. Hester Lemon, registrar-general of the territorial board of health. The birth rate was given as 45.28 per 1,000. The death rate was given as 19.05 per 1,000.

News want ads produce results.

make the vision reality.



You can own your home if you will.

## Select Lumber

—Whether you build your new home of brick or chiefly of wood, Lumber is going to be one of the most important items in its construction. And, expecting it to give you years of service, you want only the highest grade that money can buy. Yet, there is no need of paying exorbitant prices for it.

When You Build Insist on Having

**BENTLEY'S**  
BETTER Finish  
BETTER Hardwood Floors  
BETTER Roofs

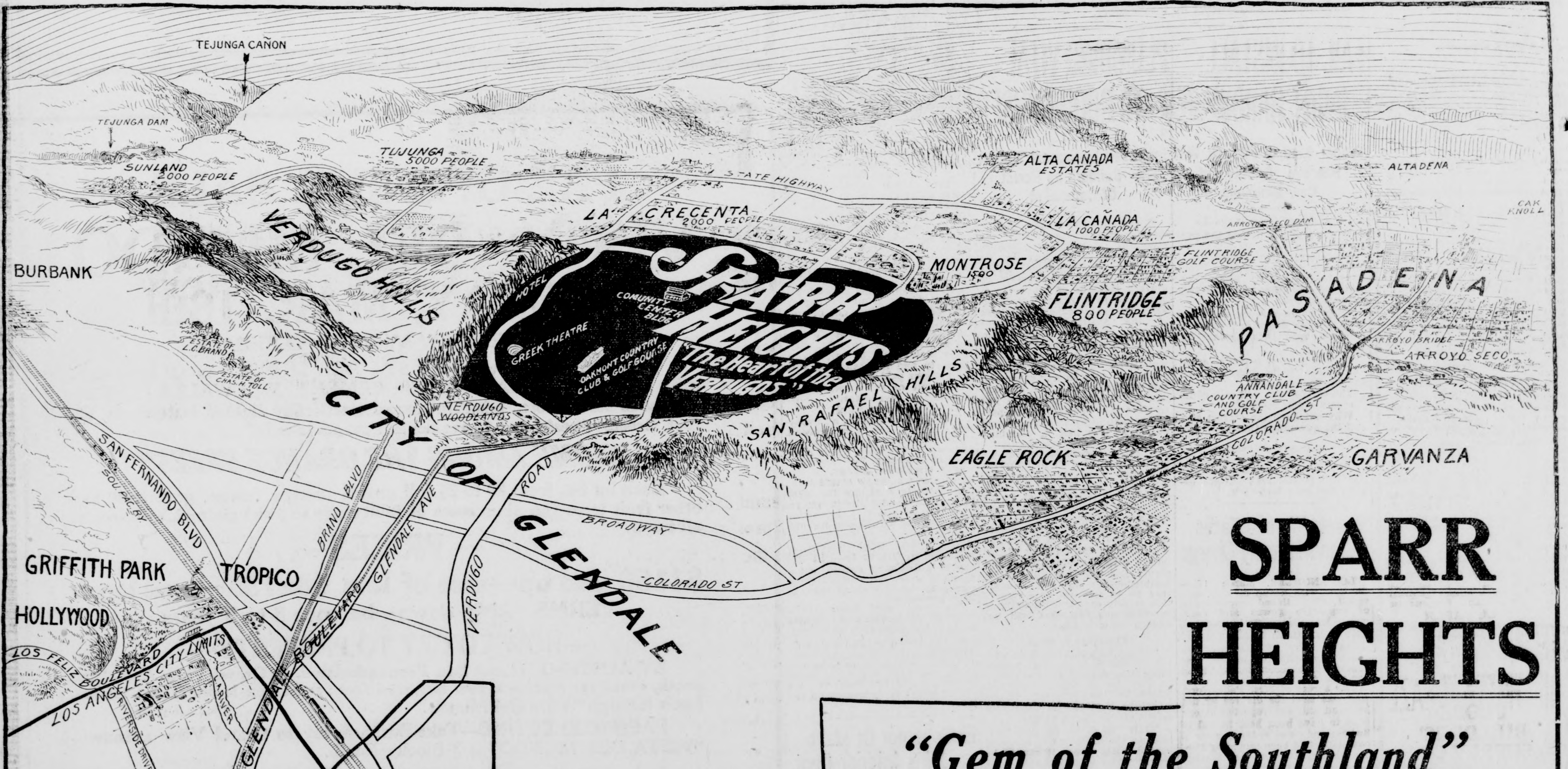
Free Plans and Building Information In Our Up-to-Date Service Department

## Bentley Lumber Co.

460 West Los Feliz Road

Glendale, Calif.

USE GLENDALE EVENING NEWS WANT ADS FOR RESULTS



# SPARR HEIGHTS

### "Gem of the Southland"

Midst "Those Green Verdugo Hills"  
In the Modern City of Glendale,

Surrounding the Oakmont Country Club — for  
**IDEAL HOMESITES**

## BARNUM & WALTERS

OFFICE—VERDUGO ROAD AT MONTROSE. PHONE GLENDALE 2123-J-4

Glendale Office—200 East Broadway.  
PHONE GLEN. 2163

Hollywood Office—6612 Hollywood Blvd.  
Phone 438-910



THE HEART OF LOS ANGELES



Beautiful

# Bellehurst Park



**Look Out!  
Los Angeles!**  
or Glendale people  
will gobble up Bellehurst Park  
before you get a chance at it!

Never in all our experience in selling ten million dollars worth of high class property in the San Francisco Bay region have we seen such excitement as was created in that wonder-city of Glendale by our full page ads in all the Los Angeles papers yesterday.

In Glendale they know Bellehurst Park!

They know the marvelous beauty of this old 200 acre estate. In past days they have picnicked under its spreading oaks and magnolias, plucking oranges and grapefruit from its beautiful groves.

They know in Glendale that it is only 5 minutes away from Brand and Broadway where the Security Trust & Savings Bank of Los Angeles is erecting a \$600,000.00 office building.

They know it is only two blocks from the main boulevard and car line.

Figures to date—\$160,000.00 in sales in Bellehurst Park to Glendale only! The city manager bought one of the first lots! It's a race, Los Angeles for Bellehurst Park, with Glendale in the lead.

**COME TODAY!** The Great Pre-Opening Sale Is Now On!

## Walter H. Leimert Co.

Tract Office Just Opened—Dryden St., 2 blocks east of Brand Blvd.  
Glendale Office—246 Brand Boulevard at Colorado Boulevard.  
Los Angeles Office 1201-2-4-6 Merchants National Bank Building.  
Telephone 822-698, 823-092, or Glendale 3098

### Facts of Great Importance

No temporary buildings, duplexes, bungalow courts or apartments permitted. Only single family dwelling costing \$4,000, \$5,000, \$6,000 and \$7,500, depending on location.  
High class street improvements with curbs and sidewalks free to purchasers, now being rushed to completion.  
City water, gas, and electricity guaranteed to every lot.  
Big lots, nearly all 50, 60 or 70 feet frontage covered with bearing orange, lemon, grapefruit, or olive groves. Many shade trees over 40 years old.  
Four schools within five blocks.  
Pacific Electric trains to Los Angeles and down-town-Glendale pass within two blocks.  
This is our first tract in the Metropolitan area of Los Angeles. Our Southern California reputation rests upon the values we offer to you who buy today in Bellehurst Park.  
We have set prices way down 50% below the values justified by the ideal location, present beauty, and assured future of this wonderful property.  
100% profit should practically be realized.

### Indorsements that count.

Two of the many telegrams received during the past week by Walter H. Leimert.

MY BEST WISHES FOR SUCCESS IN YOUR NEW ENTERPRISE YOUR DEVELOPMENT IN OAKLAND OF THE PIEDMONT AND LAKE DISTRICTS WAS A REVELATION OF WHAT ARTISTIC AND INTELLIGENT SUBDIVISION CAN ACCOMPLISH YOU HAVE PLACED THE STAMP OF PERMANENT BEAUTY UPON MANY SECTIONS SETTING AN EXAMPLE WHICH IS INFLUENCING MOST FAVORABLY THE STYLE OF DEVELOPMENT OF THE ENTIRE CITY AN INFLUENCE FOR GOOD WHICH THROUGH THE YEARS TO COME CANNOT BE MEASURED

W W GARTHWAITE  
President Oakland Bank

GOOD LUCK AND ALL GOOD WISHES IN YOUR LOS ANGELES UNDERTAKING YOUR DEVELOPMENT WORK IN PIEDMONT AND THE LAKE DISTRICT HAS BEEN OF THE HIGHEST CLASS AND WHILE WE YOUR FRIENDS HERE ARE WILLING THAT YOU SHOULD DEVOTE A PORTION OF YOUR TIME TO DEVELOPMENT WORK AND HOME BUILDING IN LOS ANGELES WE ARE NOT WILLING TO LOSE FROM OUR MIDST ONE WHOM WE ESTEEM SO HIGHLY AND ONE WHO HAS DONE SO MUCH FOR THIS COMMUNITY

VICTOR H METCALF  
Secretary of the Navy under Roosevelt

out and bring it with you.



Map Showing Proximity of Bellehurst Park to Glendale Business Center

### This is the best way to Bellehurst Park

#### By Automobile—

Drive to Glendale via Los Feliz Boulevard, Glendale Boulevard, San Fernando Road, or Colorado Boulevard until you reach Glendale's principal street, Brand Boulevard. Then turn north (towards mountains) and continue through Glendale's business district to Dryden Street, then 2 short blocks to the right, to Bellehurst Park.

#### By Pacific Electric—

Take front car of Glendale line trains, anywhere on 6th Street between Main and Figueroa. Get off at Dryden Street in Glendale and walk 2 short blocks east.